

REVISIONS				
ZONE	REV	DESCRIPTION	DATE	APPROVED
NA	D1	Remove "Matte" from NOTE 2; add RoHS exemption	9/11/2015	AC
NA	D1.1	Redrawn to update logo	12/13/2022	AC

**STANDARD TABLE**

BODY HEIGHT  
A -- TYPE 1  
B -- TYPE 2  
SEE TABLE

NUMBER OF SPACES  
PER LAYER  
01, 02, 03...10, etc.  
  
NUMBER OF SPACES  
IS EQUIVALENT TO THE  
NUMBER OF PINS MINUS  
ONE PIN

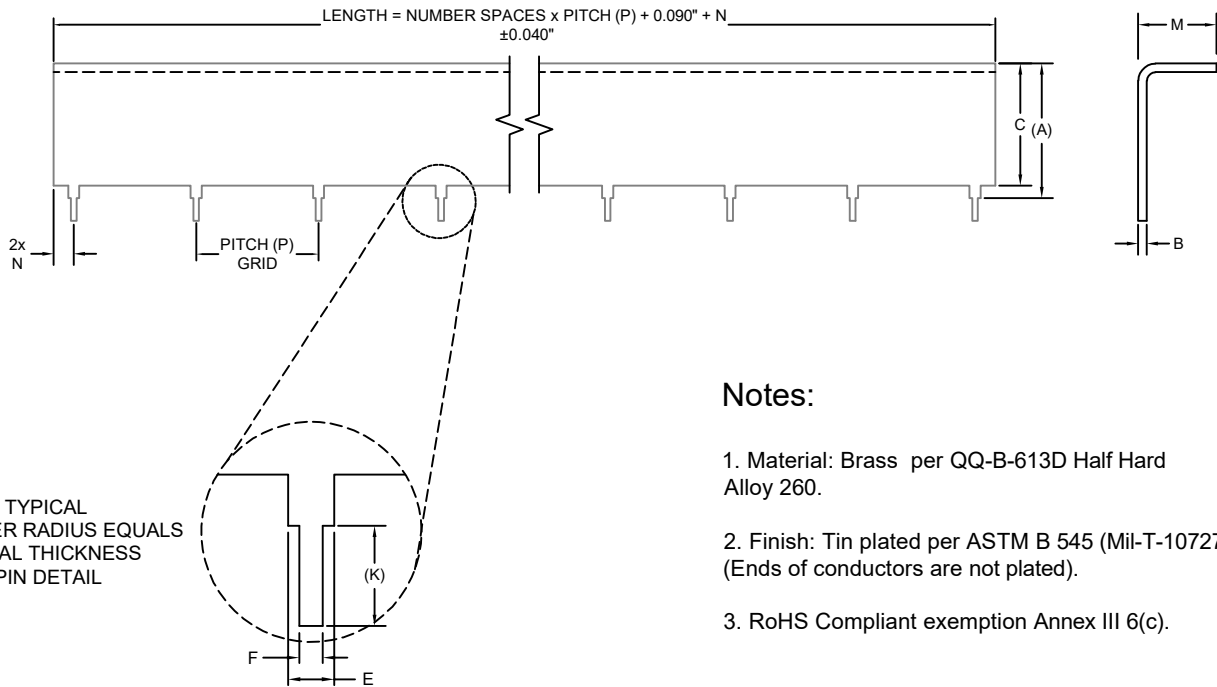
# EFI-X-XXX

PITCH (P)  
DISTANCE BETWEEN PINS  
ON A LAYER

1	0.250"
2	0.500"
3	0.700"
4	0.750"
5	1.000"
6	1.250"
7	1.400"
8	1.500"

TYPE	DIMENSIONS (INCHES)							
	A	B	C	E	F	K	M	N
1	0.34	0.040*	0.29	0.078	0.045	0.135	0.29	0.12
2	0.32	0.020*	0.27	0.085	0.020	0.175	0.27	0.12


TOLERANCES: .XXX ±0.010 .XX ±0.030 (\* THICKNESS TOL. PER QQ-B-613D)



**Notes:**

1. Material: Brass per QQ-B-613D Half Hard Alloy 260.
2. Finish: Tin plated per ASTM B 545 (Mil-T-10727) (Ends of conductors are not plated).
3. RoHS Compliant exemption Annex III 6(c).

UNLESS OTHERWISE SPECIFIED DIMENSIONS ARE IN INCHES	
CAD ENG. ACOUTINHO	DATE: 12/3/2015
CHECK	DATE:
LINEAR TOLERANCES .XXX = ± .XX = ± SEE TABLE .X = ±	THE DWG AND SPECIFICATION CONTAINED HEREON ARE PROPRIETARY AND MUST NOT BE USED, COPIED, REPRODUCED OR OTHERWISE DEALT WITH NOR ITS CONTENTS COMMUNICATED TO OTHERS EXCEPT IN ACCORDANCE WITH WRITTEN INSTRUCTIONS RECEIVED FROM E-Fab, Inc.
ANGULAR TOLERANCES ± ANGLES	
MATERIAL NOTE 1	



# E-FAB

A TPC COMPANY

1075 Richard Ave. Santa Clara, CA 95050 (800) 600.3322 www.e-fab.com

CUSTOMER				<b>E-Fab, Inc.</b>	
SIZE	FSCM NO.	DWG NO.	EFI-X-XXX		REV
A	NA	TITLE: Brass Stiffener L Formed		D1.1	
SCALE	SCALE	FILE No.	EFI-X-XXX	SHEET	1 of 1



REVISIONS				
ZONE	REV	DESCRIPTION	DATE	APPROVED
NA	F1	Remove "Matte" from NOTE 2 ref. dim . 0.100	9/11/2015	AC
NA	F1.1	Redrawn to update logo	12/13/2022	AC

**STANDARD TABLE**

NOT COATED

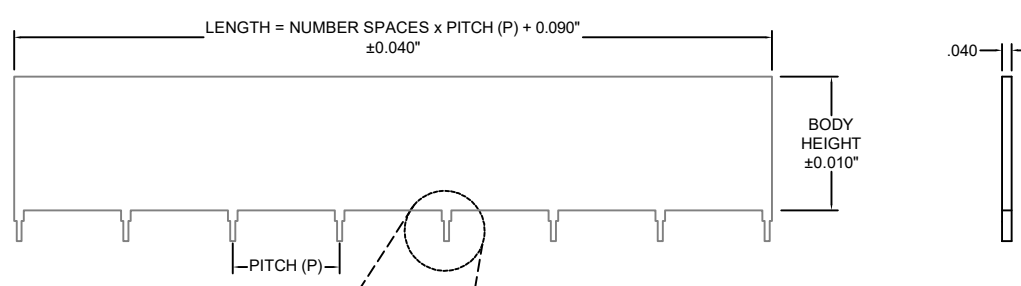
BODY HEIGHT  
 1 -- 0.250"  
 2 -- 0.375"  
 3 -- 0.500"  
 4 -- 1.000"

NUMBER OF SPACES  
 PER LAYER  
 01, 02, 03...10, etc.

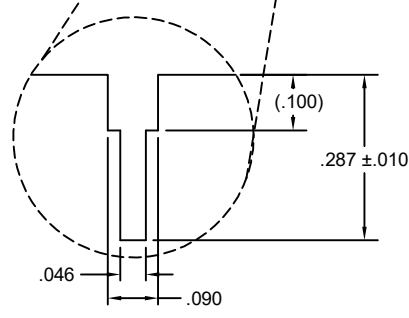
NUMBER OF SPACES  
 IS EQUIVALENT TO THE  
 NUMBER OF PINS MINUS  
 ONE PIN

# EFI-XXXX0

PITCH (P)  
 DISTANCE BETWEEN PINS  
 ON A LAYER  
 1 -- 0.500"  
 2 -- 1.000"  
 3 -- 1.500"




TYP 0.040  
 ALL CORNER RADIUS  
 PIN DETAIL



**Notes:**

1. Material: Copper 0.040" thk per ASTM B152/B152M Half Hard Alloy 110.
2. Finish: Tin plated per ASTM B 545 (Mil-T-10727) (Ends of conductors are not plated).
3. RoHS Compliant exemption Annex III 6(c).

UNLESS OTHERWISE SPECIFIED DIMENSIONS ARE IN INCHES		 <h1>E-FAB</h1> A TPC COMPANY 1075 Richard Ave. Santa Clara, CA 95050 (800) 600.3322 www.e-fab.com	
CAD ENG. ACOUTINHO	DATE: 12/3/2015		
CHECK	DATE:	CUSTOMER	
LINEAR TOLERANCES .XXX = $\pm$ .XX = $\pm$ SEE TABLE .X = $\pm$	THE DWG AND SPECIFICATION CONTAINED HEREON ARE PROPRIETARY AND MUST NOT BE USED, COPIED, REPRODUCED OR OTHERWISE DEALT WITH NOR ITS CONTENTS COMMUNICATED TO OTHERS EXCEPT IN ACCORDANCE WITH WRITTEN INSTRUCTIONS RECEIVED FROM E-Fab, Inc.	E-Fab, Inc.	
ANGULAR TOLERANCES $\pm$ ANGLES		SIZE A FSCM NO. NA SCALE SCALE	DWG NO. EFI-XXXX0 TITLE: Non-coated Stiffener
MATERIAL NOTE 1	FINISH NOTE 2	FILE No. EFI-XXXX0	SHEET 1 of 1





REVISIONS				
ZONE	REV	DESCRIPTION	DATE	APPROVED
NA	F1	Remove "Matte" from NOTE 2 ref. dim . 0.100	9/11/2015	AC
NA	F1.1	Redrawn to update logo	12/13/2022	AC

**STANDARD TABLE**

EPOXY COATED

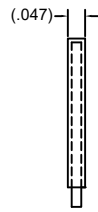
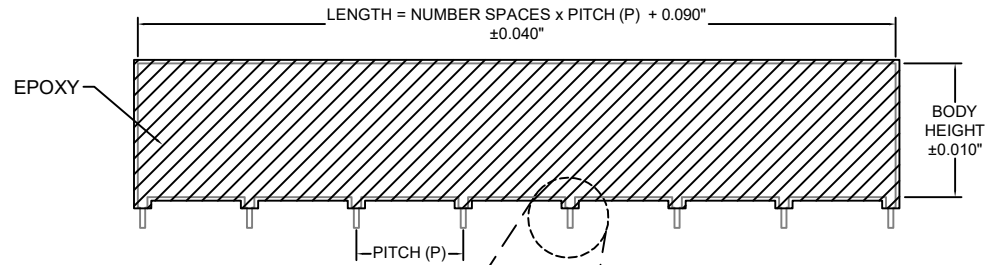
BODY HEIGHT  
 1 -- 0.250"  
 2 -- 0.375"  
 3 -- 0.500"  
 4 -- 1.000"

NUMBER OF SPACES  
 PER LAYER  
 01, 02, 03...10, etc.

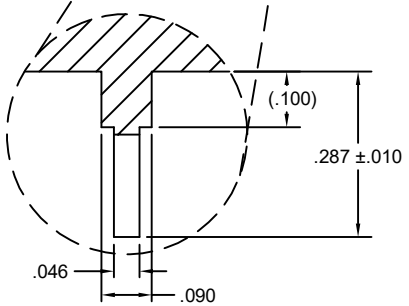
NUMBER OF SPACES  
 IS EQUIVALENT TO THE  
 NUMBER OF PINS MINUS  
 ONE PIN

# EFI-XXXX1

PITCH (P)  
 DISTANCE BETWEEN PINS  
 ON A LAYER  
 1 -- 0.500"  
 2 -- 1.000"  
 3 -- 1.500"




TYP 0.040  
 ALL CORNER RADIUS  
 PIN DETAIL



**Notes:**

1. Material: Copper 0.040" thk per ASTM B152/B152M Full Hard Alloy 110.
2. Finish: Epoxy coated over Tin plated per ASTM B 545 (Mil-T-10727) (Ends of conductors are not plated).
3. RoHS Compliant exemption Annex III 6(c).

UNLESS OTHERWISE SPECIFIED DIMENSIONS ARE IN INCHES	
CAD ENG. ACOUTINHO	DATE: 12/3/2015
CHECK	DATE:
LINEAR TOLERANCES .XXX = ± .XX = ± SEE TABLE .X = ±	THE DWG AND SPECIFICATION CONTAINED HEREON ARE PROPRIETARY AND MUST NOT BE USED, COPIED, REPRODUCED OR OTHERWISE DEALT WITH NOR ITS CONTENTS COMMUNICATED TO OTHERS EXCEPT IN ACCORDANCE WITH WRITTEN INSTRUCTIONS RECEIVED FROM E-Fab, Inc.
ANGULAR TOLERANCES ± ANGLES	
MATERIAL NOTE 1	FINISH NOTE 2



# E-FAB

A TPC COMPANY

1075 Richard Ave. Santa Clara, CA 95050 (800) 600.3322 www.e-fab.com

CUSTOMER		<b>E-Fab, Inc.</b>	
SIZE A	FSCM NO. NA	DWG NO. EFI-XXXX1	REV F1.1
TITLE: Coated Stiffener			
SCALE	SCALE	FILE No. EFI-XXXX1	SHEET 1 of 1





REVISIONS				
ZONE	REV	DESCRIPTION	DATE	APPROVED
NA	F1	Ref. total thk (0.100) and dim 0.100 remove matte from NOTE 2	9/11/2015	AC
NA	F1.1	Redrawn to update logo	12/13/2022	AC

**STANDARD TABLE SINGLE LAYER**

NOT COATED

# EFI-XXXXX0

**BODY HEIGHT**  
 1 - 0.250"  
 2 - 0.375"  
 3 - 0.500"  
 4 - 1.000"

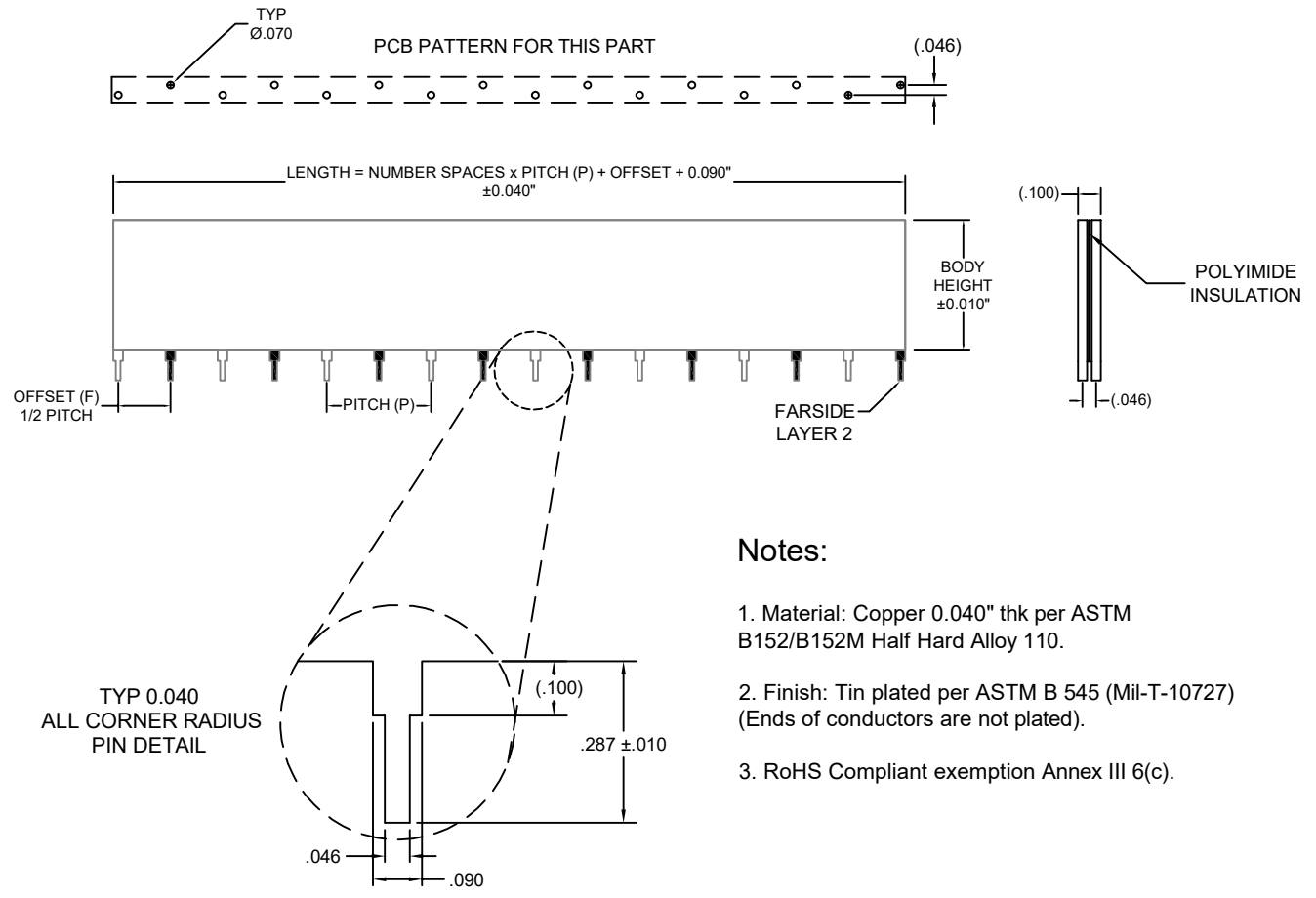
**NUMBER OF SPACES PER SINGLE LAYER**  
 01, 02, 03...10, etc.

**NUMBER OF SPACES IS EQUIVALENT TO THE NUMBER OF PINS MINUS ONE PIN**

**PITCH (P)**  
 DISTANCE BETWEEN PINS ON A SINGLE LAYER  
 11 - 0.500"  
 22 - 1.000"  
 33 - 1.500"


**OFFSET (F) = 1/2 PITCH**  
 DISTANCE FROM PIN 1 ON LAYER 1 TO PIN 1 ON LAYER 2 ON REPETITIVE PATTERN PART  
 11 - 0.250"  
 22 - 0.500"  
 33 - 0.750"

A DOUBLE LAYER PWR / GND BUS BAR / STIFFENER IS MADE FROM TWO SINGLE LAYER BUS BAR / STIFFENER CHOSEN BY COMPLETING THE STANDARD ABOVE.



**Notes:**

1. Material: Copper 0.040" thk per ASTM B152/B152M Half Hard Alloy 110.
2. Finish: Tin plated per ASTM B 545 (Mil-T-10727) (Ends of conductors are not plated).
3. RoHS Compliant exemption Annex III 6(c).

UNLESS OTHERWISE SPECIFIED DIMENSIONS ARE IN INCHES		 <h1>E-FAB</h1> <p>A TPC COMPANY</p> <p>1075 Richard Ave. Santa Clara, CA 95050 (800) 600.3322 www.e-fab.com</p>	
CAD ENG. ACOUTINHO	DATE: 12/3/2015		
CHECK	DATE:	CUSTOMER	
<b>LINEAR TOLERANCES</b> .XXX = ± .XX = ± SEE TABLE .X = ±	<b>THE DWG AND SPECIFICATION CONTAINED HEREON ARE PROPRIETARY AND MUST NOT BE USED, COPIED, REPRODUCED OR OTHERWISE DEALT WITH NOR ITS CONTENTS COMMUNICATED TO OTHERS EXCEPT IN ACCORDANCE WITH WRITTEN INSTRUCTIONS RECEIVED FROM E-Fab, Inc.</b>	<h2>E-Fab, Inc.</h2>	
<b>ANGULAR TOLERANCES</b> ± ANGLES		SIZE: A FSCM NO.: NA	DWG NO.: EFI-XXXXX0 TITLE: 2 Layer (Pwr.Gnd) Non coated BusBar
MATERIAL: NOTE 1 FINISH: NOTE 2	SCALE: SCALE FILE No.: EFI-XXXXX0	SHEET: 1 of 1	



REVISIONS				
ZONE	REV	DESCRIPTION	DATE	APPROVED
NA	F1	Ref. total thk (0.100) and dim 0.100 remove matte from NOTE 2	9/11/2015	AC
NA	F1.1	Redrawn to update logo	12/13/2022	AC

**STANDARD TABLE SINGLE LAYER**

EPOXY COATED

# EFI-XXXXX1

**BODY HEIGHT**  
 1 - 0.250"  
 2 - 0.375"  
 3 - 0.500"  
 4 - 1.000"

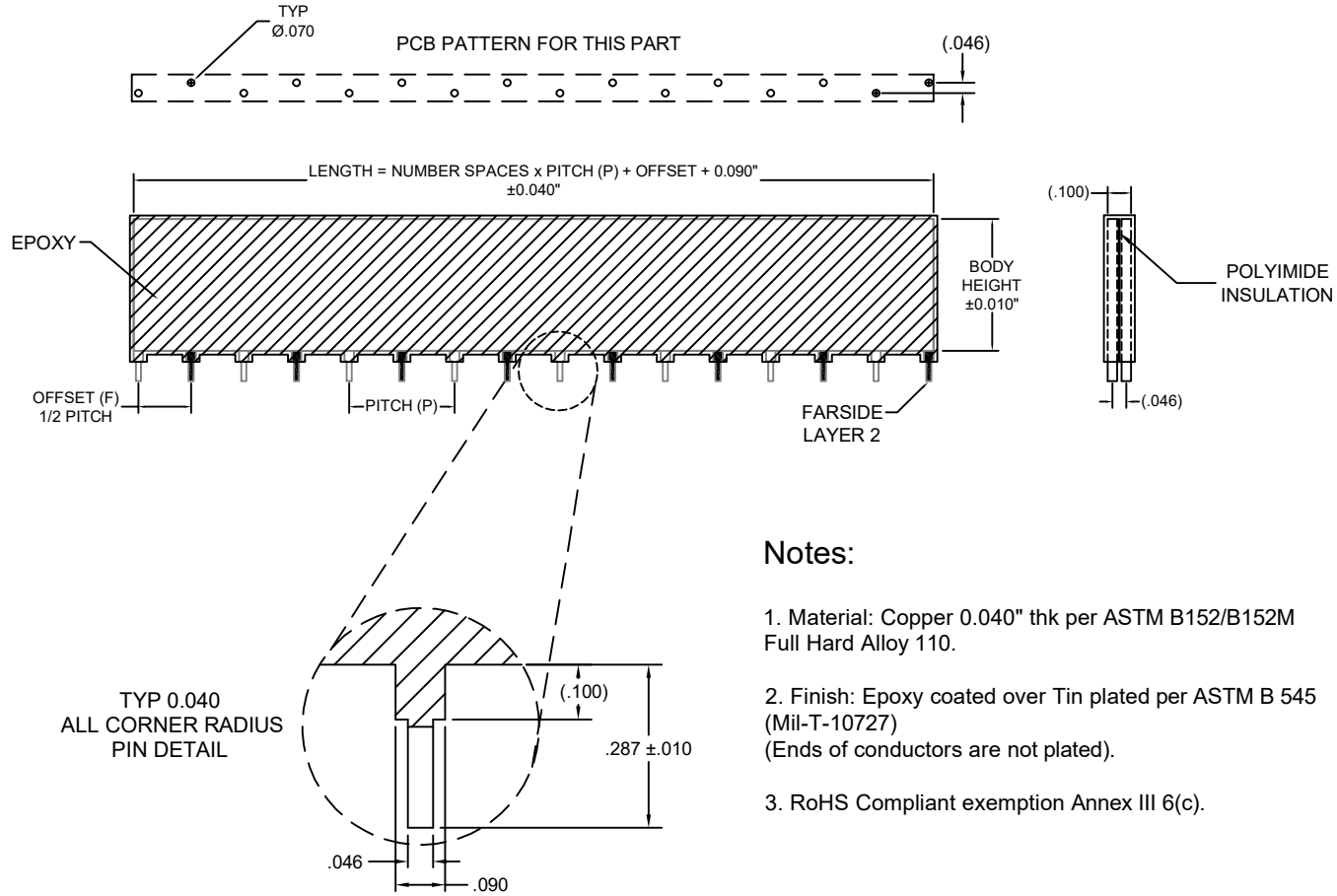
**NUMBER OF SPACES PER SINGLE LAYER**  
 01, 02, 03...10, etc.

**NUMBER OF SPACES IS EQUIVALENT TO THE NUMBER OF PINS MINUS ONE PIN**

**PITCH (P)**  
 DISTANCE BETWEEN PINS ON A SINGLE LAYER  
 11 - 0.500"  
 22 - 1.000"  
 33 - 1.500"

**OFFSET (F) = 1/2 PITCH**  
 DISTANCE FROM PIN 1 ON LAYER 1 TO PIN 1 ON LAYER 2 ON REPETITIVE PATTERN PART  
 11 - 0.250"  
 22 - 0.500"  
 33 - 0.750"

A DOUBLE LAYER PWR / GND BUS BAR / STIFFENER IS MADE FROM TWO SINGLE LAYER BUS BAR / STIFFENER CHOSEN BY COMPLETING THE STANDARD ABOVE.



**Notes:**

1. Material: Copper 0.040" thk per ASTM B152/B152M Full Hard Alloy 110.
2. Finish: Epoxy coated over Tin plated per ASTM B 545 (Mil-T-10727) (Ends of conductors are not plated).
3. RoHS Compliant exemption Annex III 6(c).

UNLESS OTHERWISE SPECIFIED DIMENSIONS ARE IN INCHES	
CAD ENG. ACOUTINHO	DATE: 12/3/2015
CHECK	DATE:
<b>LINEAR TOLERANCES</b> .XXX = ± .XX = ± SEE TABLE .X = ±	<b>THE DWG AND SPECIFICATION CONTAINED HEREON ARE PROPRIETARY AND MUST NOT BE USED, COPIED, REPRODUCED OR OTHERWISE DEALT WITH NOR ITS CONTENTS COMMUNICATED TO OTHERS EXCEPT IN ACCORDANCE WITH WRITTEN INSTRUCTIONS RECEIVED FROM E-Fab, Inc.</b>
<b>ANGULAR TOLERANCES</b> ± ANGLES	
MATERIAL NOTE 1	FINISH NOTE 2



# E-FAB

A TPC COMPANY

1075 Richard Ave. Santa Clara, CA 95050 (800) 600.3322 www.e-fab.com

CUSTOMER				<b>E-Fab, Inc.</b>	
SIZE	FSCM NO.	DWG NO.	EFI-XXXXX1		REV
A	NA	TITLE:	2 Layer (Pwr.Gnd) Coated BusBar		F1.1
SCALE	SCALE	FILE No.	EFI-XXXXX1	SHEET	1 of 1